

# 2-Port Isolator, 5.8 GHz, CPR159



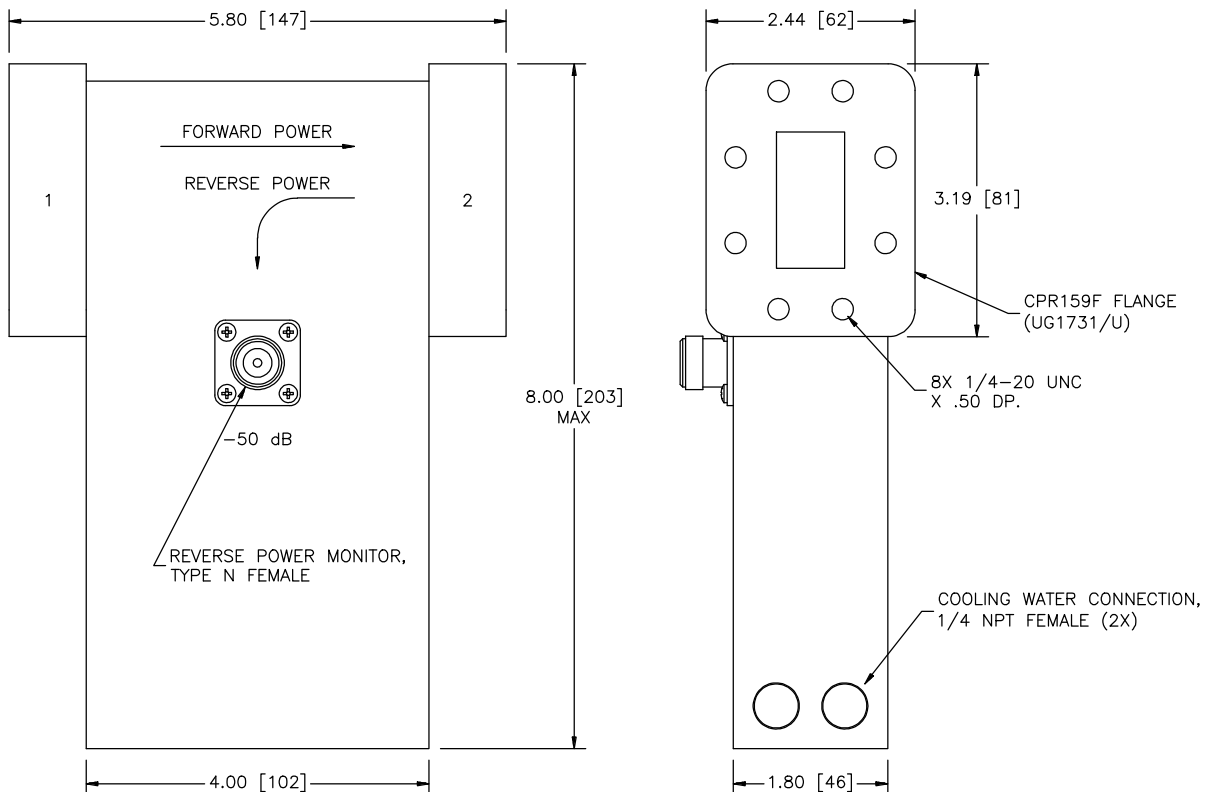
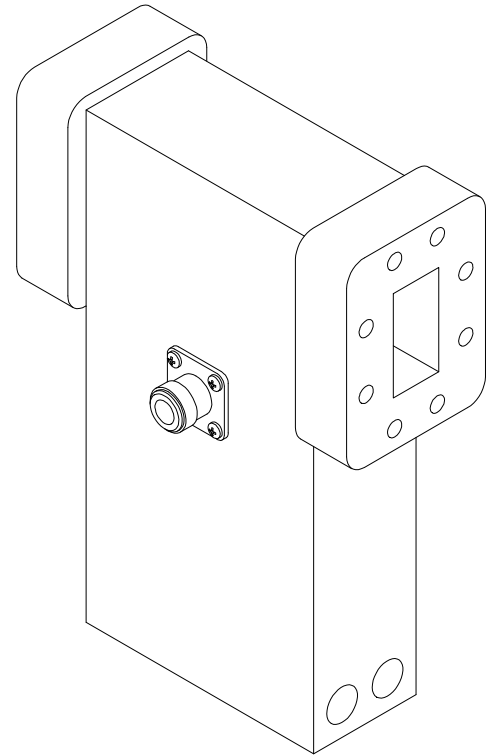
## Model GA1111

The model GA1111 2-port isolator is designed for high power industrial heating applications requiring high reliability and rugged construction. These isolators are most often used for protecting the magnetron from the damaging effects of reverse power. Included is a coupler port for monitoring reverse power.

Construction of the GA1111 is primarily dip brazed aluminum waveguide. Flange adapters are mounted to each port to accommodate the desired flange style.

### General Specifications:

Frequency	5.8 GHz nominal
Forward Power	700W continuous max.
Reverse Power	700W continuous max.
Waveguide	WR159
Input Flange	CPR159F (UG1731/U), tapped holes
Input VSWR	1.20:1 max. (Port 1)
Insertion Loss	0.4 dB max. (Port 1 to Port 2)
Isolation	20 dB min. (Port 2 to Port 1)
Coupler Port	Type N female
Coupling Factor	-50 dB +/- 1 dB
Cooling Water	1 gpm nominal (0.5 gpm minimum), 40 °C max. inlet temp, 50 psig max. inlet pressure
Cooling Water Connections	1/4 NPT Female
Construction	Aluminum
Finish	Chemical conversion coating
Weight (approx)	7 lbs (3.2 kgm)



**GERLING APPLIED ENGINEERING, INC.**

© 2006 Gerling Applied Engineering, Inc.  
 PO Box 580816 • Modesto, CA 95358 • USA  
 Phone: +1-209-527-8960 • Fax: +1-209-527-5385  
 E-mail: sales@5800MHz.com • Web: www.5800MHz.com