

3kW Microwave Generator, 2.45 GHz

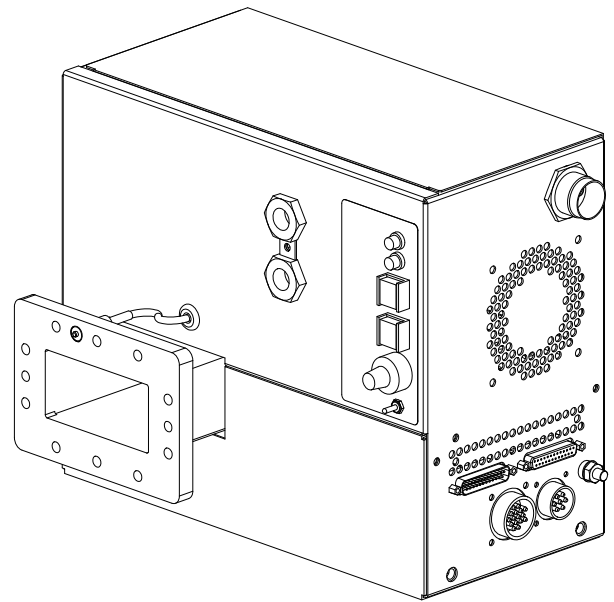
GERLING

Model GA4313A
Model GA4323A
Model GA4329A

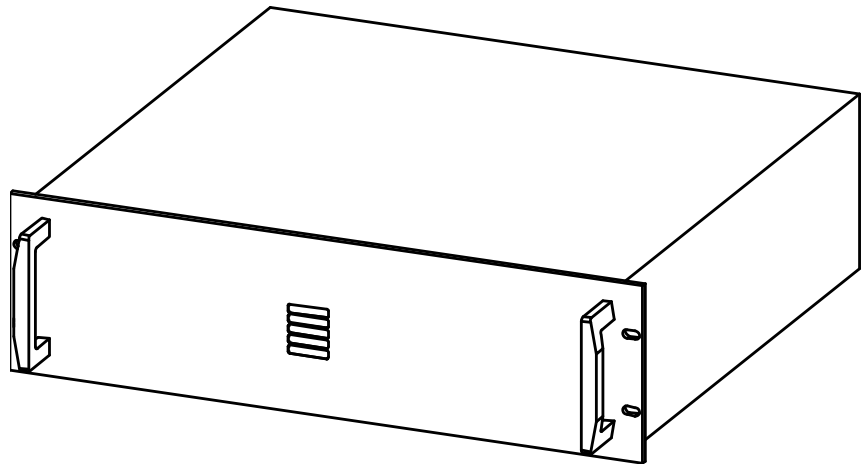
Models GA4313A GA4323A and GA4329A are complete 3kW microwave generator systems designed for use in laboratory research and process development applications. Consisting of separate rack mountable power supply and remote magnetron head modules, these user-friendly systems are easily installed and operated with a minimal amount of set-up. Local controls provide complete functionality conveniently near the work area as well as remotely via fully functional analog and digital (serial) remote control interfaces. Included with each system is a complete set of interconnect cabling between the two modules for safe and convenient setup and operation.

Serviceability of the magnetron head was a primary consideration in its design. Removal and replacement of the internal magnetron can be done in minutes using standard tools. The magnetron head is designed to use the Panasonic 2M265 magnetron but can also accommodate other water-cooled magnetrons available from multiple distributors. Model GA4313A also features the popular WR284 O-D (quick-disconnect) waveguide flange that uses a convenient quick-release clamp (GAE model GA8410) for waveguide connections.

The power supply module combines state-of-the-art inverter (switch mode) technology with microprocessor controls to provide high performance in a compact and light weight package. An embedded microprocessor allows multi-functional user programmability.



Magnetron Head Module



Power Supply Module

General Specifications:

| | |
|--------------------|---|
| Output Power (max) | 3kW |
| Output Power Range | 10-100%, continuously variable |
| Magnetron | Panasonic 2M265, water-cooled |
| Output Waveguide | GA4313A: WR284 GA4323A: WR340 GA4329A: WR284 |
| Output Flange | GA4313A: UG584/U (with O-D taper) GA4323A: UG1713/U GA4329A: UG1725/U |
| Frequency | 2450 MHz +/- 30 MHz |
| Cooling | Mag Head: Water @ 0.5 gpm min Power Supply: Internal fans |
| Input Line Power | 190-240 VAC, 50/60 Hz, 3-phase, 19 Amp/phase max (17 A @ 208 VAC) |
| Remote Controls | Analog, RS-232 |
| Interlocks | Water flow, Waveguide flange, Access cover, Magnetron over-temp |
| Weight (approx.) | Mag Head: 25 lb (11 kg) Power Supply: 38 lb (17 kg) |

Options:

- ◆ Alternate output waveguide flanges
- ◆ Arc detection

Accessories:

- ◆ Flange Hardware Kit, Model GA8409 (please see GA8409 specification for selection)
- ◆ Flange Clamp, Quick-Release, Model GA8410



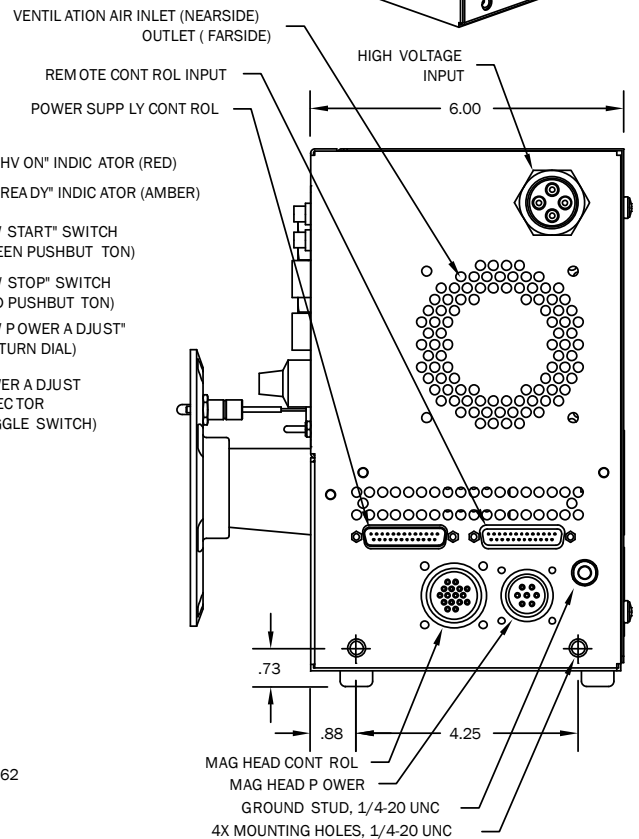
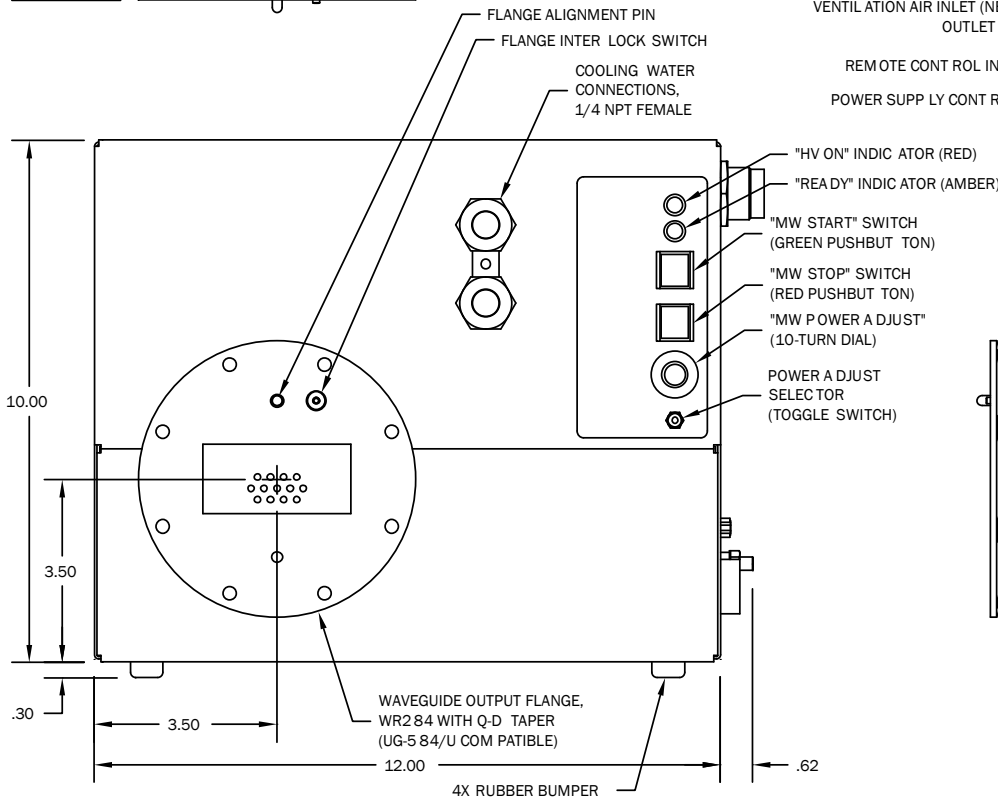
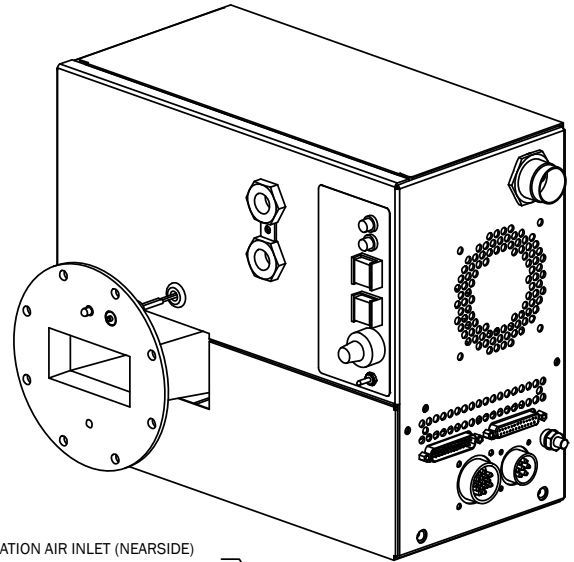
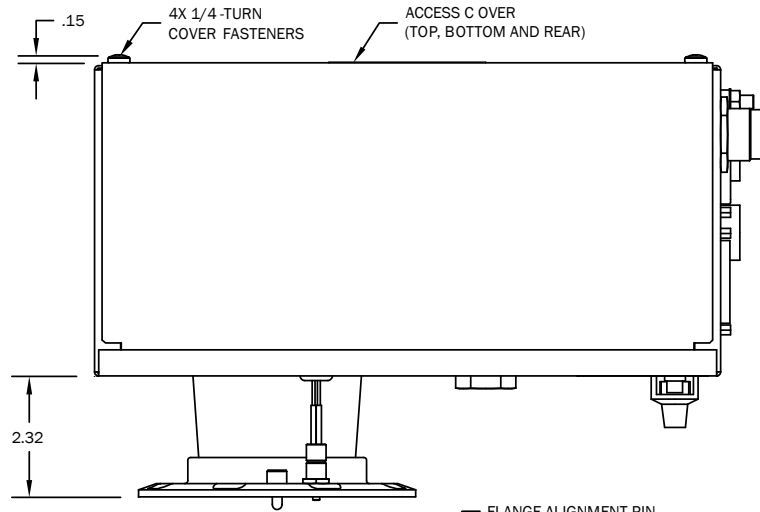
GERLING APPLIED
ENGINEERING, INC.

© 2006-2015 Gerling Applied Engineering, Inc.
 PO Box 580816 • Modesto, CA 95358 • USA
 Phone: +1-209-527-8960 • Fax: +1-209-527-5385
 E-mail: sales@2450MHz.com • Web: www.2450MHz.com

3kW Microwave Generator, 2.45 GHz

GERLING

Model GA4313A
Model GA4323A
Model GA4329A



Magnetron Head for model GA4313A



GERLING APPLIED
ENGINEERING, INC.

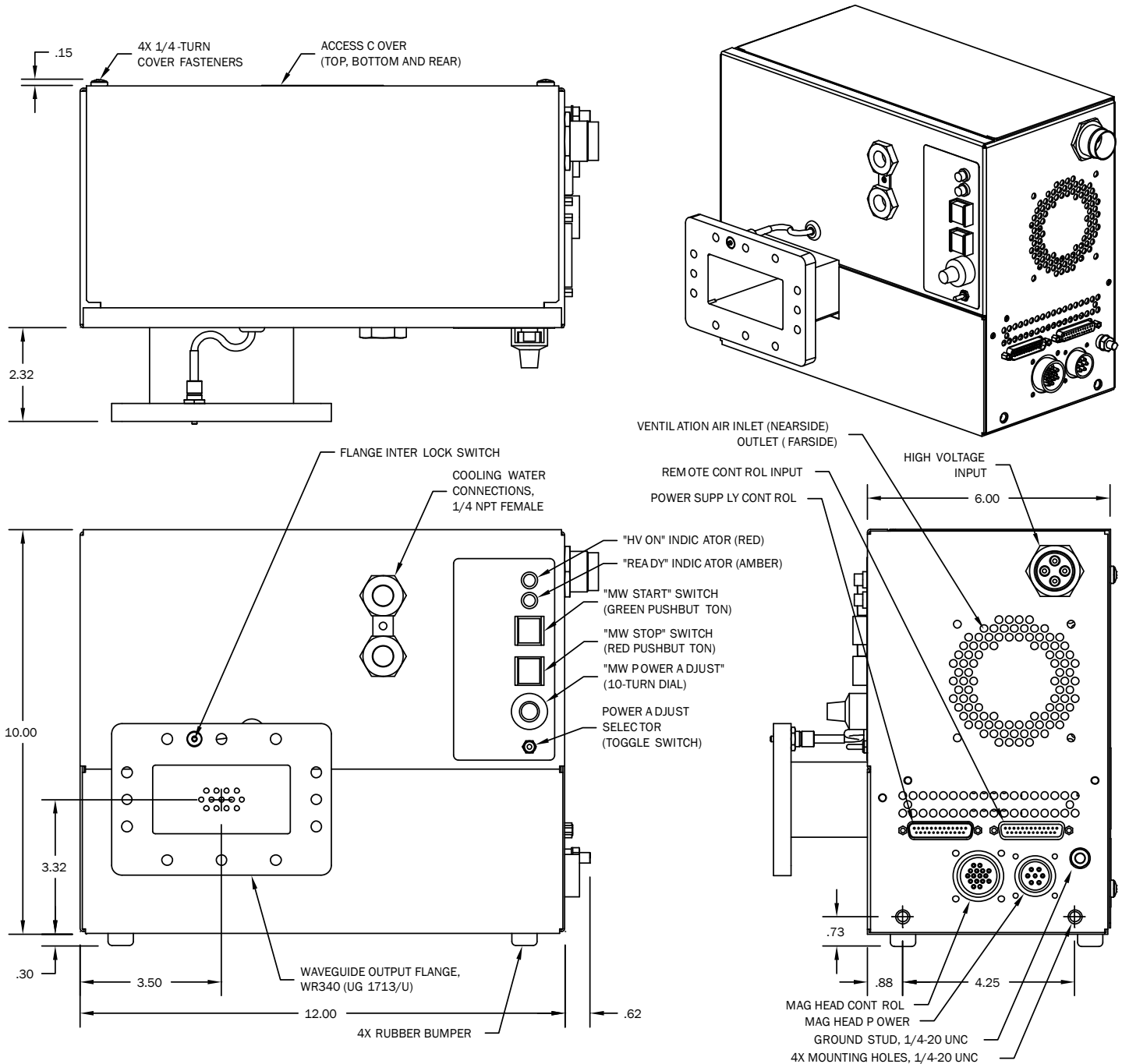
© 2006-2015 Gerling Applied Engineering, Inc.
PO Box 580816 • Modesto, CA 95358 • USA
Phone: +1-209-527-8960 • Fax: +1-209-527-5385
E-mail: sales@2450MHz.com • Web: www.2450MHz.com

All dimensions are in inches [millimeters].

3kW Microwave Generator, 2.45 GHz

GERLING

Model GA4313A
Model GA4323A
Model GA4329A

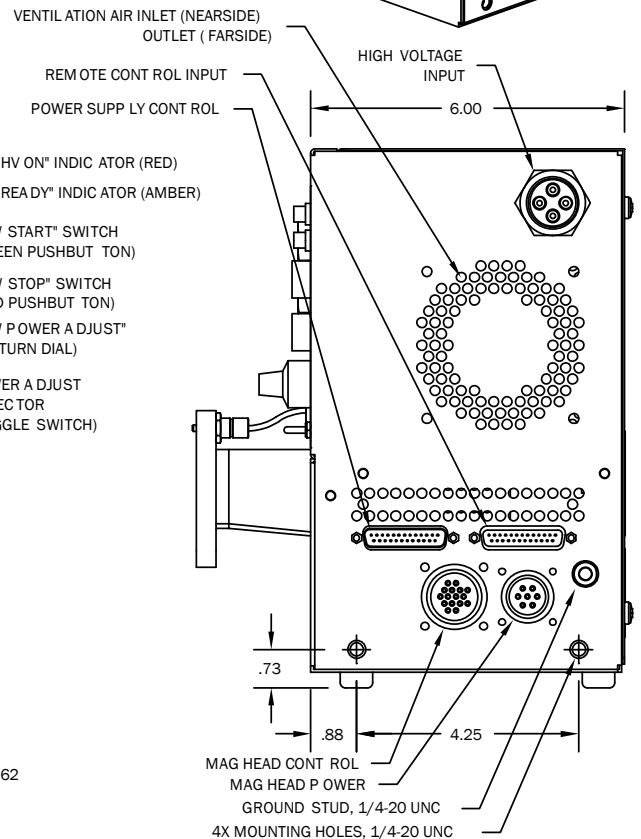
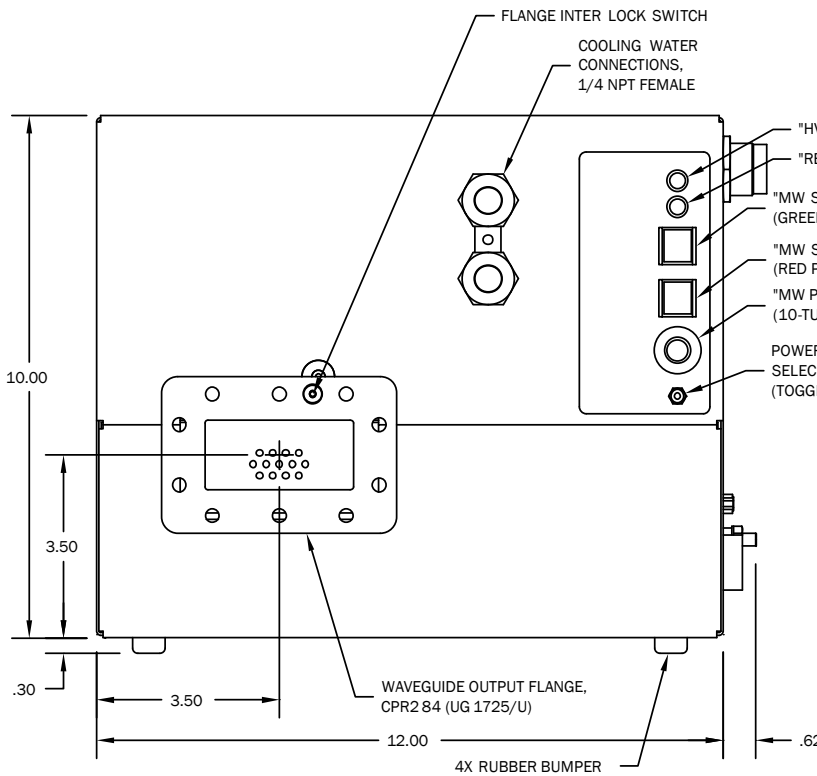
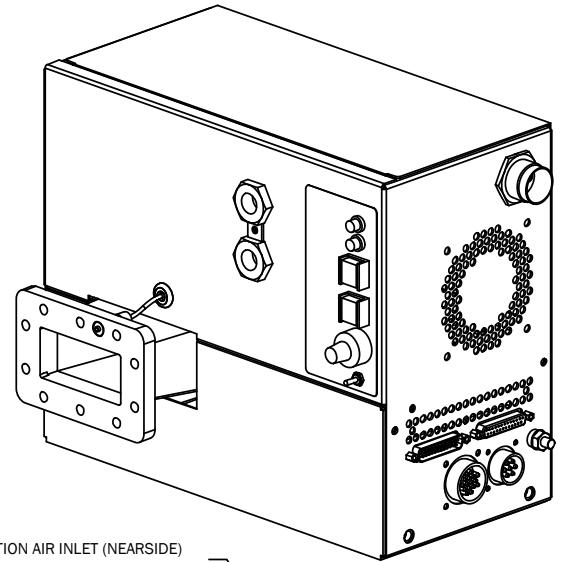
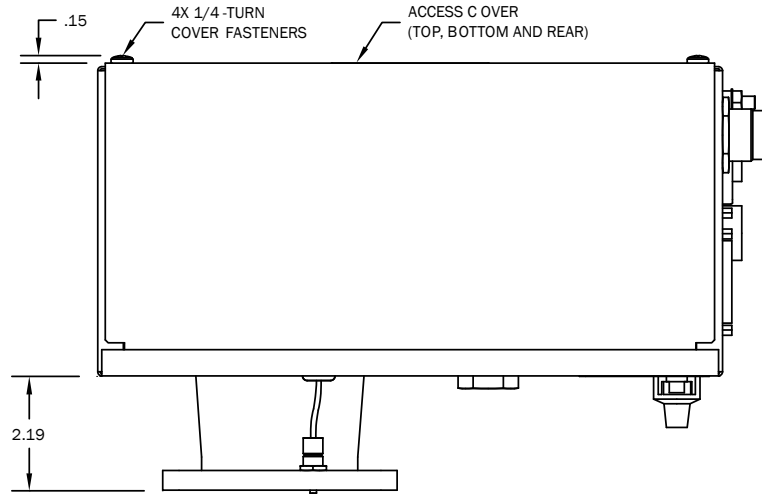


Magnetron Head for model GA4323A

3kW Microwave Generator, 2.45 GHz

GERLING

**Model GA4313A
Model GA4323A
Model GA4329A**

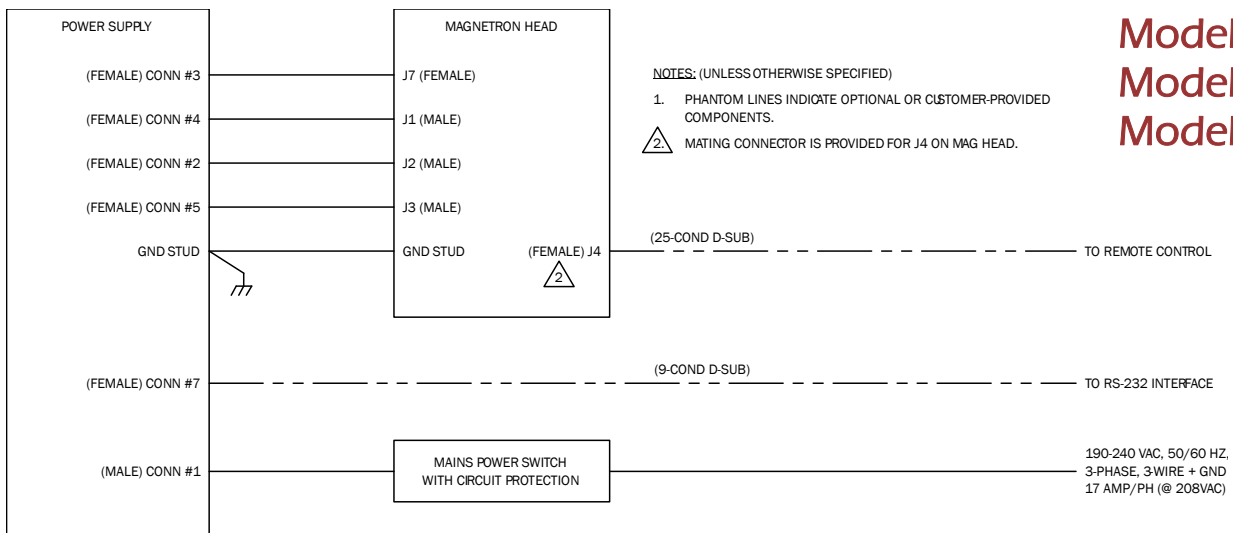


Magnetron Head for model GA4329A

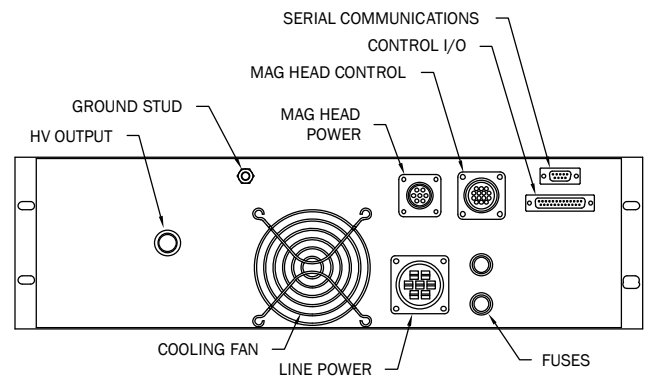
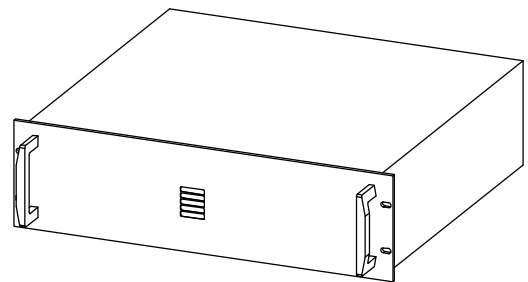
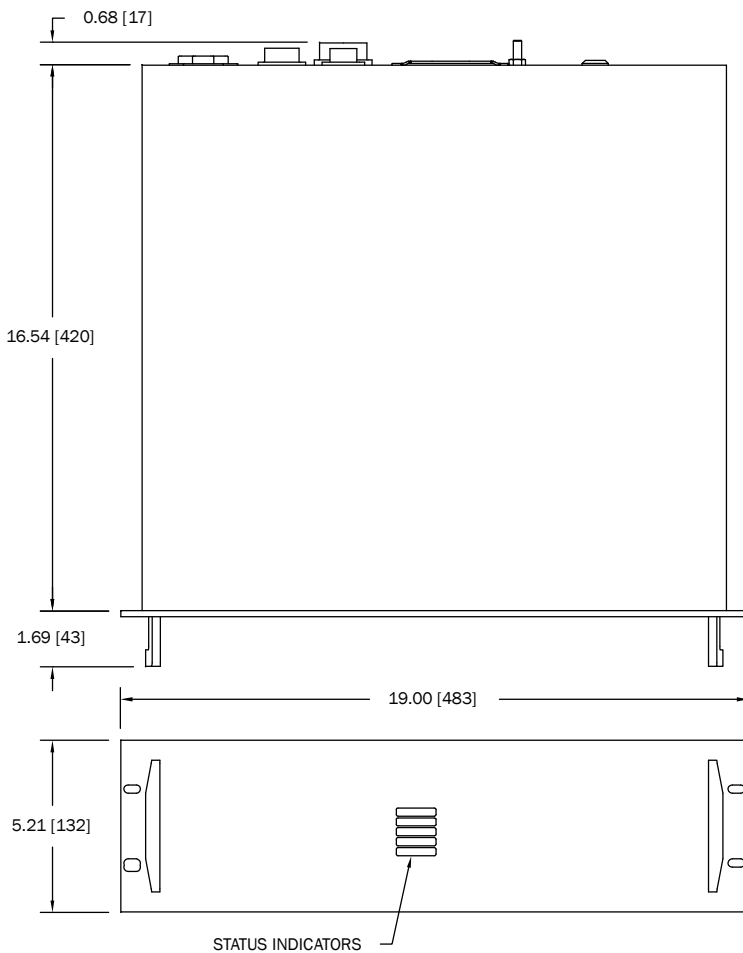
3kW Microwave Generator, 2.45 GHz



Model GA4313A
Model GA4323A
Model GA4329A



System Interconnect Diagram



High Voltage Power Supply (all models)



GERLING APPLIED ENGINEERING, INC.

© 2006-2015 Gerling Applied Engineering, Inc.
 PO Box 580816 • Modesto, CA 95358 • USA
 Phone: +1-209-527-8960 • Fax: +1-209-527-5385
 E-mail: sales@2450MHz.com • Web: www.2450MHz.com

All dimensions are in inches [millimeters].